

## STANDARD DRY PRESSURE GAUGES DN 40, 50 & 63

### STANDARD DRY PRESSURE GAUGES DN 40, 50 & 63

Usable with liquid or gaseous fluids that do not attack chemically the alloys of copper, do not present a high stickiness and do not crystallize.

Their preferable application is in pneumatic and hydraulic circuits, compressors, filters and pressure regulators. They fulfil norm CE.

#### Constructive and functional characteristics:

##### **Accuracy:**

Ø40 Type 2,5 according to EN 837-1.

Ø50 & Ø63 Type 1,6 according to EN 837-1.

**Ranges:** -1..0 to 0..40 bar for DN 40 and DN 50, -1..0 to 0..400 bar for DN 63 or any other equivalent unit of pressure or vacuum, standard ranges according to DIN 16 128.

**Ambient temperature:** -20...+60°C.

**Process fluid temperature:** Max. +60°C.

##### **Temperature error:**

Additional error when the temperature of the pressure element deviates from 20°C. +/-0,3% every 10 °C of change.

**Working pressure:** Max 75% of E.S.

**Temporary overpressure:** Not applicable.

**Process connection Racord:** In brass.

**Elastic element:** Phosphoric bronze. In "C" for  $\geq 40$  bar scales. In spiral for  $>40$  bar scales.

**Case:** In ABS plastic.

**Window:** Clear plastic.

**Movement:** In brass.

**Pointer:** Painted black aluminium.

##### **Optional extras:**

Tin-silver welding.

Glass window.

Others accuracy ranges.



This publication does not try to establish the bases of a contract and the company keeps the right to modify without previous notice the design and the specifications of the instruments, in accordance with his politics of continued development.

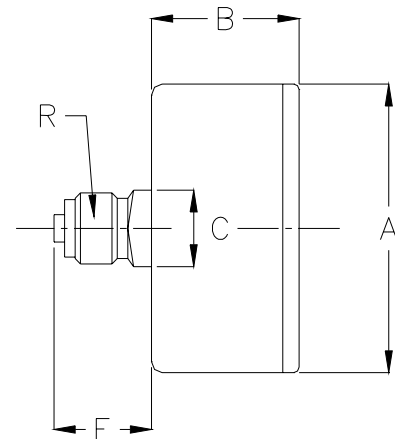
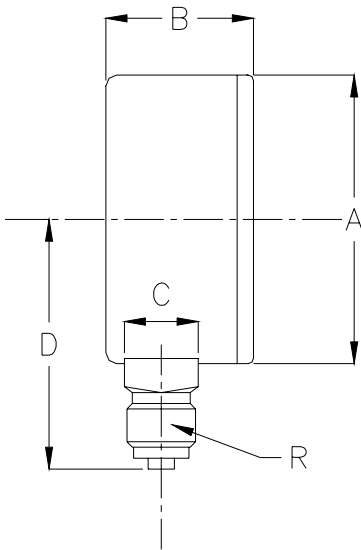
**MEI Manometría e Instrumentación, s.l.**

**Pol. Ind. "Gelidense" 3, nave 19 E-08790 Gelida - Barcelona**

**Tf. +34 937083 110 Fax. +34 937 083 109 [www.mei.es](http://www.mei.es) e-mail: [info@mei.es](mailto:info@mei.es)**

## STANDARD DRY PRESSURE GAUGES DN 40, 50 & 63

### DIMENSIONS



LOWER CONNECTION TYPE					
DN	A	B	C	D	R
40	42	25	11x11	27,5	1/8"
50	53	28	14x14	48	1/4"
63	63,5	28	14x14	51	1/4"

### DIMENSIONS (mm)

BACK CONNECTION TYPE					
DN	A	B	C	E	R
40	42	25	11x11	14	1/8"
50	53	28	14x14	19	1/4"
63	63,5	28	14x14	19	1/4"

This publication does not try to establish the bases of a contract and the company keeps the right to modify without previous notice the design and the specifications of the instruments, in accordance with his politics of continued development.