

POOL FILTER PRESSURE GAUGE

POOL FILTER PRESSURE GAUGE

Used with liquid or gaseous fluids that do not chemically attack the copper alloys, do not have a high viscosity, and do not crystallize.

Its preferred application is in pneumatic and hydraulic circuits, compressors, filters, and pressure regulators. They comply with EC Standards.

Constructive and functional characteristics

Accuracy: 1.6% according to EN 837-1.

Ranges: 0..3 bar for DN 50, for other diameters, ranges any other equivalent pressure or vacuum unit, please consult

Room temperature: -20...+60°C.

Process fluid temperature: max. +60° C.

Temperature error:

Additional error when the temperature of the sensitive element deviates from 20°C. +/- 0.3% every 10 °C of variation.

Work pressure:

Max. 75% of V.S.F.

Temporary overpressure: Not applicable.

Connection to process: In brass.

Tubular spring:

Phosphorous bronze in "C" for scales ≥ 40 bar in spiral for scales > 40 bar.

Case: In ABS plastic.

Window: In transparent plastic.

Movement: In brass.

Pointer: In black lacquered aluminum.

Other options:

Solder in tin-silver alloy.

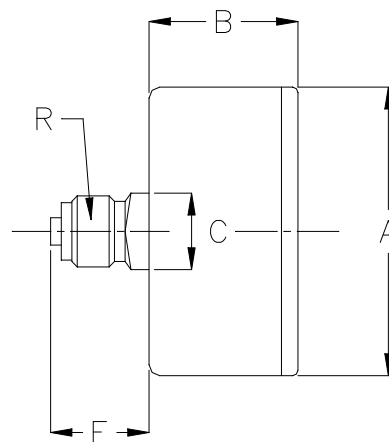
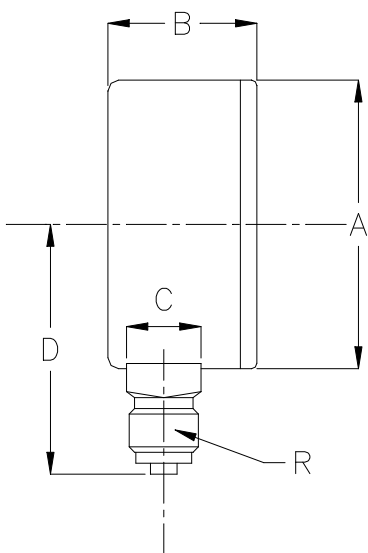
Other pressure ranges.



This publication is not intended to lay the foundations of a contract and the company reserves the right to modify the design and specifications of the instruments without prior notice, in accordance with its policy of continuous development.

POOL FILTER PRESSURE GAUGE

DIMENSIONS



RADIAL TYPE					
DN	A	B	C	D	R
40	42	25	11x11	27,5	1/8"
50	53	28	14x14	48	1/4"
63	63,5	28	14x14	51	1/4"

DIMENSIONS (mm)

AXIAL TYPE					
DN	A	B	C	E	R
40	42	25	11x11	14	1/8"
50	53	28	14x14	19	1/4"
63	63,5	28	14x14	19	1/4"

This publication is not intended to lay the foundations of a contract and the company reserves the right to modify the design and specifications of the instruments without prior notice, in accordance with its policy of continuous development.