

## EXPANSION RECEPTABLE PRESSURE GAUGE

### STANDARD PRESSURE GAUGES - CHECK EXPANSION RECEPTABLE

Usable with liquid or gaseous fluids that do not chemically attack the copper alloys, do not have a high viscosity, and do not crystallize.

The preferential application is in pneumatic and hydraulic circuits, compressors, filters, and pressure regulators. They comply with the EC Standards.

#### Constructive and functional characteristics

**Accuracy:**

Ø50 Class 1,6 according to EN 837-1.

**Ranges:** 0..4 bar for DN 50, for other diameters, ranges any other equivalent pressure or vacuum unit, please consult

**Room temperature:** -20...+60°C.

**Process fluid temperature:** max. +60° C.

**Temperature error:**

Additional error when the temperature of the sensitive element deviates from 20°C. +/- 0.3% every 10 °C of variation.

**Working pressure:**

Max. 75% of V.S.F.

**Temporary overpressure:** Not applicable.

**Connection to process::** In brass

**Tubular spring:**

Phosphorous bronze in "C" for scales  $\geq 40$  bar in spiral for scales  $> 40$  bar.

**Case:** In ABS plastic

**Window:** In transparent plastic

**Movement:** In brass

**Pointer:** In black lacquered aluminium

**Other options:**

Solder in tin-silver alloy.

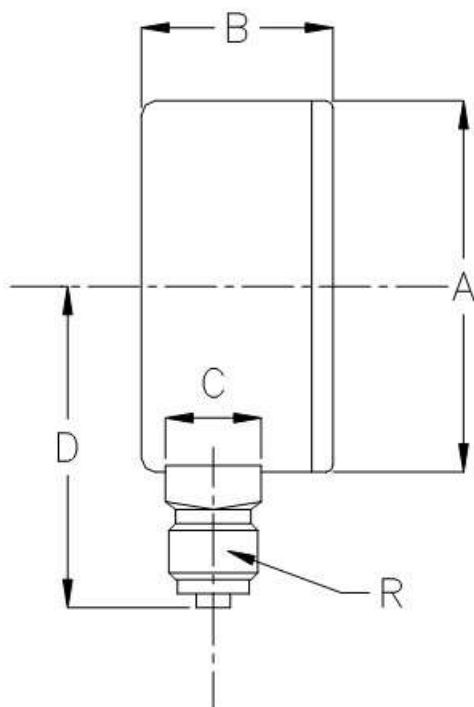
Other pressure ranges.



This publication is not intended to lay the foundations of a contract and the company reserves the right to modify the design and specifications of the instruments without prior notice, in accordance with its policy of continuous development.

**EXPANSION RECEPTABLE  
PRESSURE GAUGE**

**DIMENSIONS**



DN	A	B	C	D	R
50	53	28	14x14	48	

(mm)

This publication is not intended to lay the foundations of a contract and the company reserves the right to modify the design and specifications of the instruments without prior notice, in accordance with its policy of continuous development.

**MEI Manometría e Instrumentación, s.l.**  
**Pol. Ind. "Gelidense" 3, nave 19 E-08790 Gelida Barcelona**  
**Tf. +34 93 779 35 21      [www.mei.es](http://www.mei.es)    [export@grupoheca.es](mailto:export@grupoheca.es)**